

# Former Tronox/Kerr-McGee Facility

## Investigation Update: Area to the Northeast of the Facility

Springfield, MO

February 7, 2017

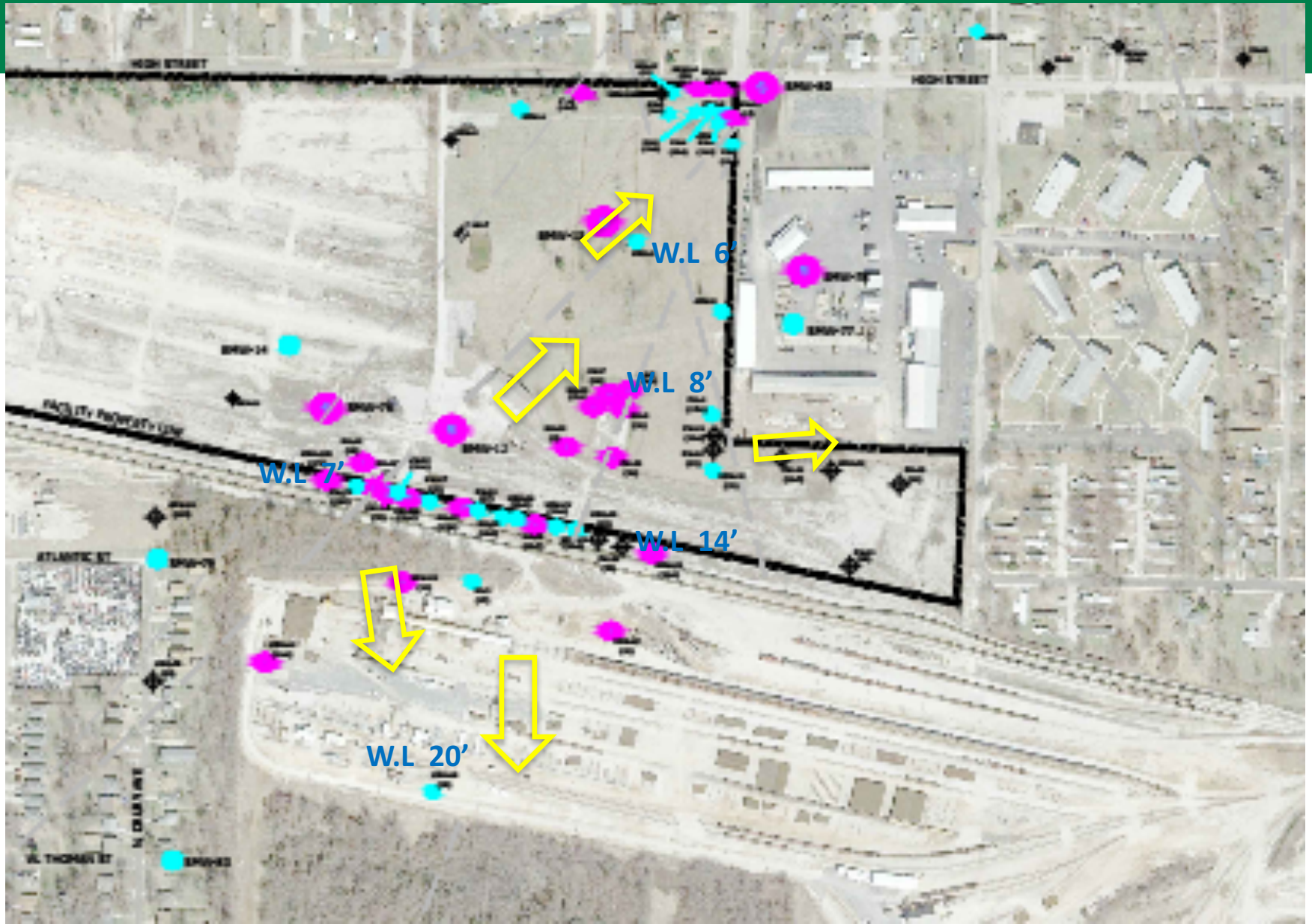


# Tonight's Discussion

- Introductions
- Overview of Investigation
- Next Steps
- Preliminary Schedule
- Questions



# Groundwater Wells Are Being Monitored to See If Contamination is Moving



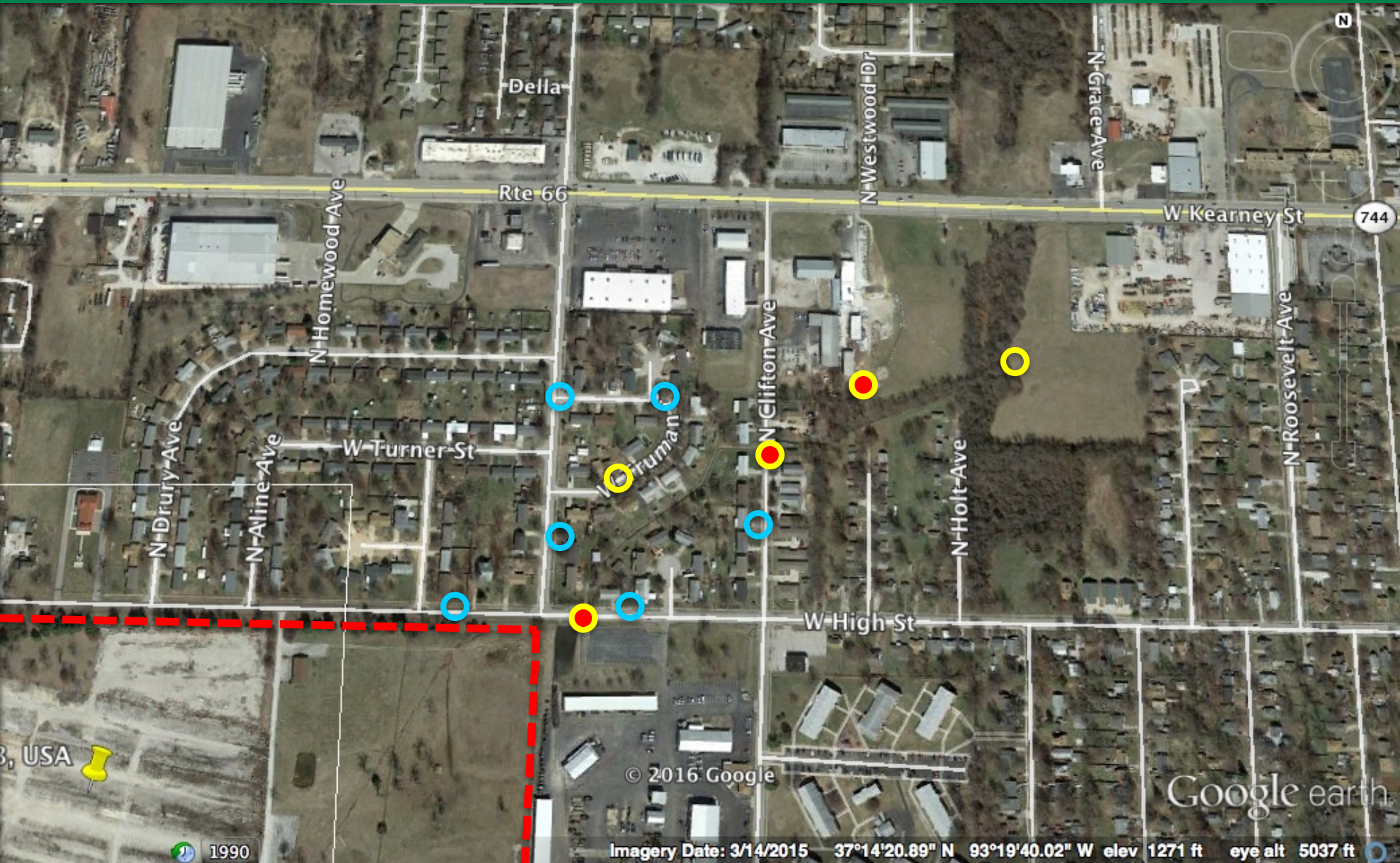


**Based on Results, Our  
Focus Continues to be  
Neighborhood to  
Northeast**





# In December 2016, We Said We Would Get More Information on Areas of Groundwater Contamination



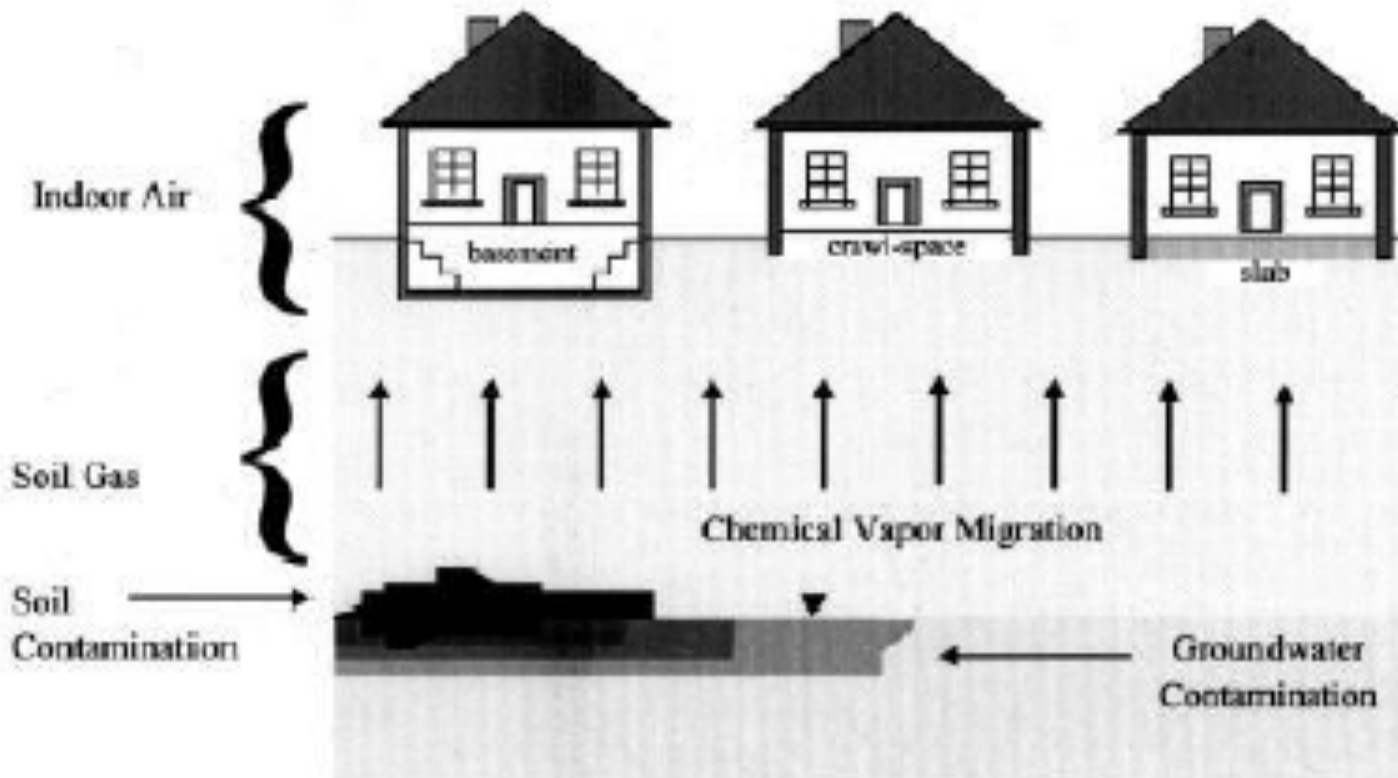


# Since December Meeting, We've Installed 2 New Permanent Wells and 4 Temporary Wells to Collect Groundwater Samples



# Vapor Intrusion

## Vapor Intrusion into Indoor Air

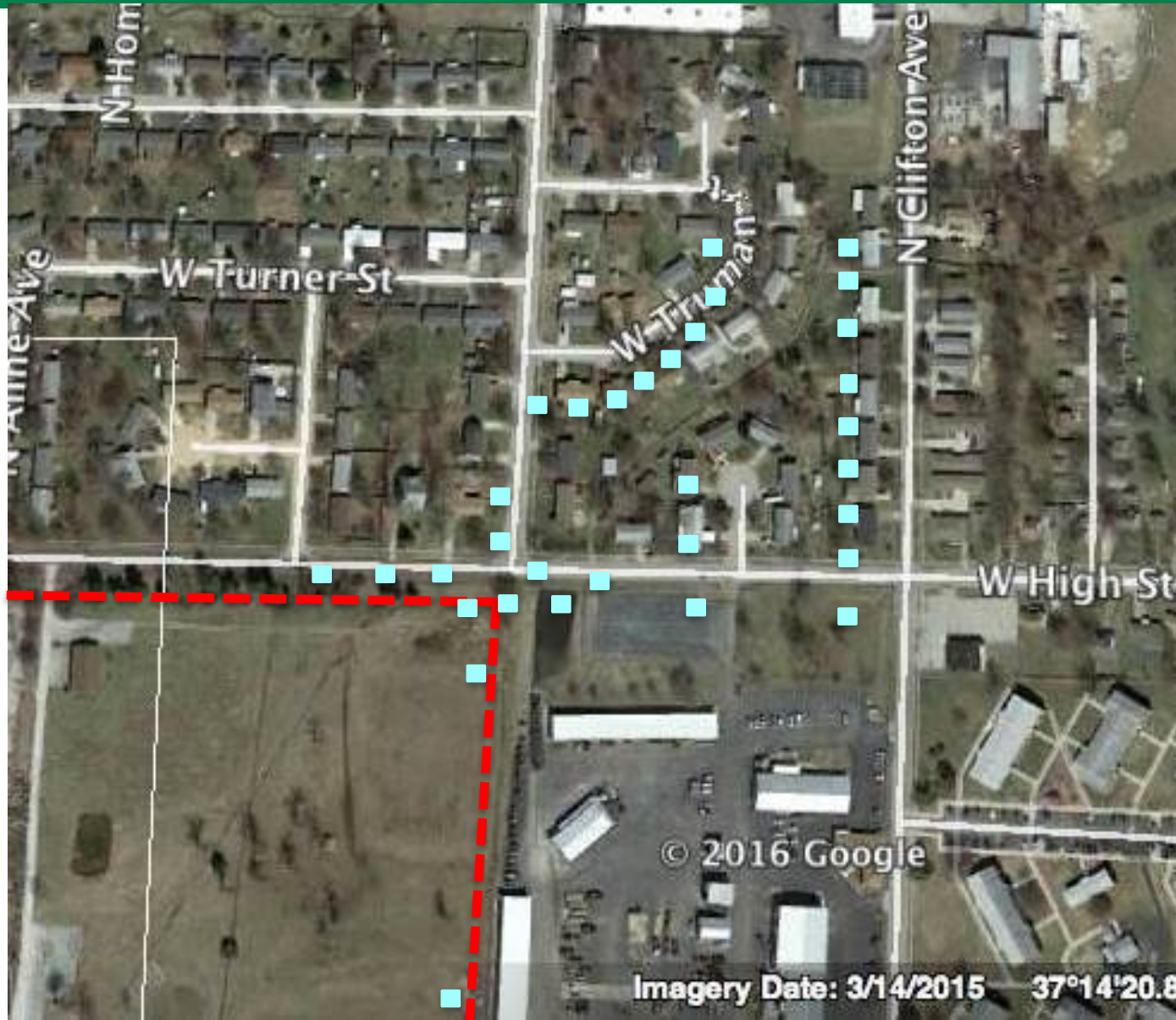


*This diagram shows how vapors can rise up through the soil and into your home.*





# We've Also Collected Air Samples From Soil in Several Locations





# We Are Evaluating Results to Protect Human Health

- Groundwater results show levels of some chemicals above Groundwater Protection Standards.
- Because we found volatile chemicals in groundwater, we sampled soil-gas to see if vapors are present.
- Soil-gas sample results are being evaluated and compared against Missouri Department of Natural Resources (MoDNR) determined screening levels to see if indoor-air sampling is needed.



# Possible Next Steps Once Screening Levels Are Determined

- No need for urgent action; no immediate health concern
- Screening levels (for lifetime exposure) exceeded at some locations
- Most exceedances are due to a chemical not related to Facility
- Multistate Trust and MoDNR are evaluating results to see where indoor-air sampling may be needed





# Possible Next Steps Once Screening Levels Are Determined

- If a home is selected for indoor-air sampling:
  - Homeowner asked for written permission to sample air in home (access agreement). Spring 2017.
  - Gather information:
    - Construction and condition
    - Contents of homes
  - Sample indoor air (several times over a year)
- Sample soil in yards, if flooding (sheen, odors)



# Next Steps/Schedule

- Evaluate Sampling Results: Related to Facility? Exceed Applicable Screening Levels? – February
- If Required:
  - Indoor-Air Sampling Work Plan Preparation and MoDNR Approval – February/March
  - Obtain Access Agreements – Spring
  - Perform Home/Building Surveys – Spring
  - Indoor Air and Soil Sampling – Spring/Early Summer
  - Sample Results Available – Summer





**We Are Working Closely with MoDNR and the  
Missouri Department of Health and Senior Services  
and  
We Will Continue to Update You As Additional  
Information Becomes Available**

**Questions?**



**Greenfield Environmental Multistate Trust, LLC  
Trustee of the Multistate Environmental Response Trust**